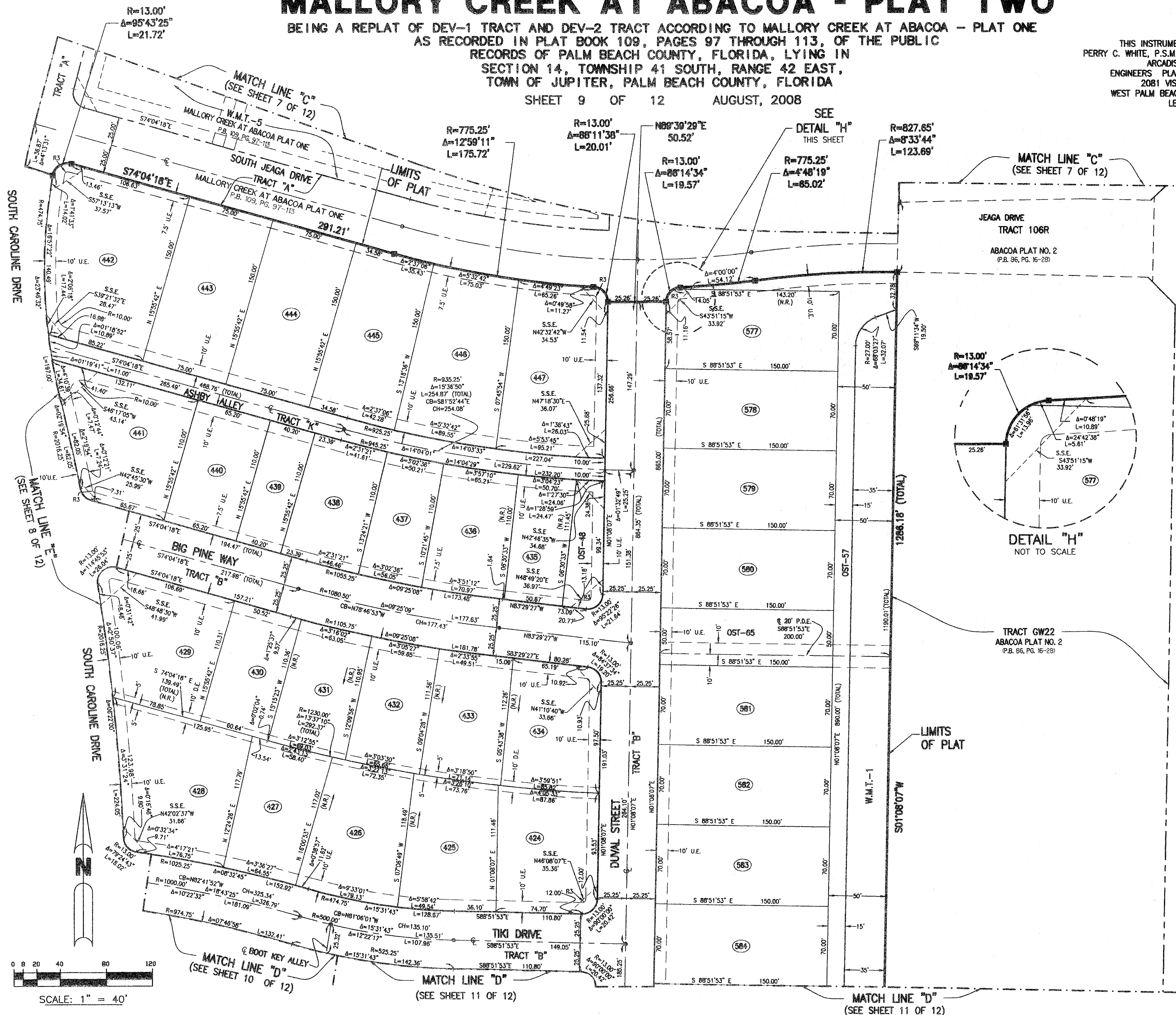


MALLORY CREEK AT ABACOA - PLAT TWO

BEING A REPLAT OF DEV-1 TRACT AND DEV-2 TRACT ACCORDING TO MALLORY CREEK AT ABACOA - PLAT ONE AS RECORDED IN PLAT BOOK 109, PAGES 97 THROUGH 113, OF THE PUBLIC RECORDS OF PALM BEACH COUNTY, FLORIDA, LYING IN SECTION 14, TOWNSHIP 41 SOUTH, RANGE 42 EAST, TOWN OF JUPITER, PALM BEACH COUNTY, FLORIDA

SHEET 9 OF 12 AUGUST, 2008

THIS INSTRUMENT PREPARED BY
PERRY C. WHITE, P.S.M. 4213, STATE OF FLORIDA
ARCADIS U.S., Inc.
ENGINEERS PLANNERS SURVEYORS
2081 VISTA PARKWAY
WEST PALM BEACH, FLORIDA 33411
LB7062



- LEGEND:**
- - SET PERMANENT REFERENCE MONUMENT, LB #7062
 - - FOUND P.R.M. #26
 - - SET PERMANENT CONTROL POINT, LB #7062
 - - FOUND PERMANENT CONTROL POINT, LB #7062
 - R - RADIUS
 - Δ - DELTA ANGLE
 - L - ARC LENGTH
 - ⊙ - CENTERLINE
 - AC - ACRES
 - BLVD - BOULEVARD
 - CB - CHORD BEARING
 - CH - CHORD DISTANCE
 - D.B. - DEED BOOK
 - D.E. - DRAINAGE EASEMENT
 - I.E.E. - INGRESS AND EGRESS EASEMENT
 - L.A.E. - LIMITED ACCESS EASEMENT
 - L.D.E. - LANDSCAPE EASEMENT
 - LB - LICENSED BUSINESS
 - (N.R.) - NON-RADIAL
 - N.T.S. - NOT TO SCALE
 - O.R.B. - OFFICIAL RECORD BOOK
 - OST - OPEN SPACE TRACT
 - P.B. - PLAT BOOK
 - P.D.E. - PRIVATE DRAINAGE EASEMENT
 - POS. - PAGES
 - P.I. - POINT OF INTERSECTION
 - P.L.S. - PROFESSIONAL LAND SURVEYOR
 - P.O.B. - POINT OF BEGINNING
 - P.O.C. - POINT OF COMMENCEMENT
 - P.R.C. - POINT OF REVERSE CURVATURE
 - P.R.M. - PERMANENT REFERENCE MONUMENT
 - P.U.E. - PRIVATE UTILITY EASEMENT
 - R3 - 3.00' UTILITY EASEMENT RADIUS
 - (RAD) - RADIAL
 - (R.F.) - RADIAL TO FRONT LOT LINE
 - (R.R.) - RADIAL TO REAR LOT LINE
 - R.O.W. - RIGHT-OF-WAY
 - S.E. - SIDEWALK EASEMENT
 - S.S.E. - SAFE SIGHT EASEMENT
 - T.S.E. - TEMPORARY SIDEWALK EASEMENT
 - U.E. - UTILITY EASEMENT
 - U.F.E. - FORCE MAIN EASEMENT
 - - TO NON-RADIAL CURVE

